

PREPARATIONS BEFORE COLLECTION

Before you order collection of your empty packaging, it is important that you prepare and ensure that the packaging meets our entry criteria. Please take care of the following:



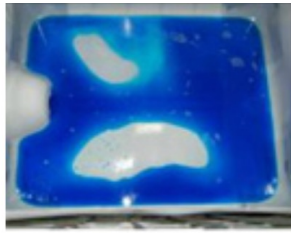
1. THE PACKAGING MUST BE EMPTY

Without external or internal product residues. IBCs, drums and cans have to be completely empty (drip-free) which means free of liquids, solid particles and/or solidified materials.

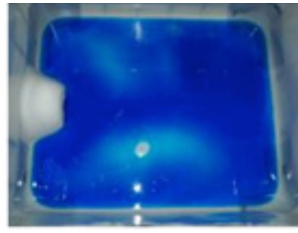
Empty seen from above



10 litre - seen from above



20 litre - seen from above



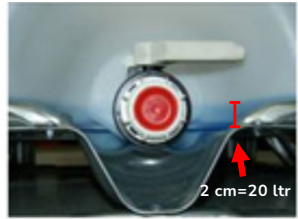
30 litre - seen from above



10 litre - seen from front



20 litre - seen from front



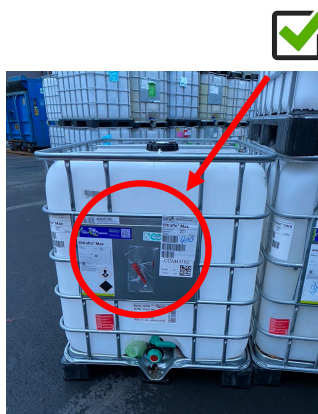
2 cm=20 ltr

30 litre - seen from front



2. THE PACKAGING MUST BE LABELLED WITH THE LATEST CONTENTS

The latest content must be clearly visible - all labels must show the latest product content, dangerous goods - all must be readable.





3. THE PACKAGING MUST BE WITH LIDS

All bottom valves, top openings on the IBC, cans and drums must be closed, tight, AND lids attached as if it was a full packaging.



4. PLASTIC CANS MUST BE STACKED ON PALLETS

All plastic cans must be stacked on pallets. 1 pallet with 20 litre cans typically consists of 72 cans (6 layers) and can be stacked with 2x36 pcs. Please notice that the cans must be properly filmed/secured on the pallet.



5. PLASTIC DRUMS MUST BE PACKED ON PALLETS

All plastic drums MUST be stacked on pallets. 1 pallet with 220 litre drums typically consists of 8 drums (2 layers). Please notice: The drums must be properly secured on the pallet.



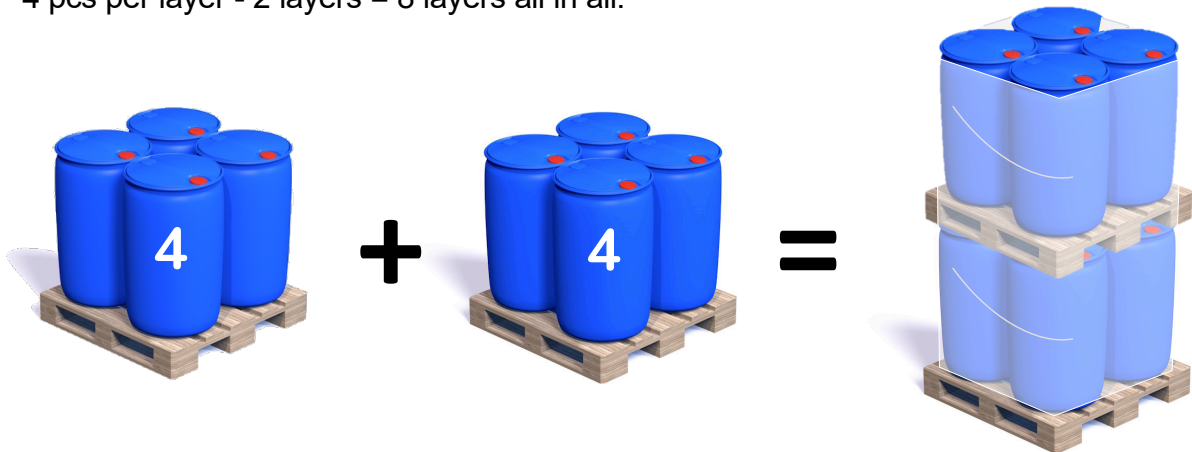


6. PLASTIC DRUMS MUST BE STACKED ON PALLETS

All plastic drums MUST be stacked on pallets, due to the safety of our truck drivers and our employees' working environment.

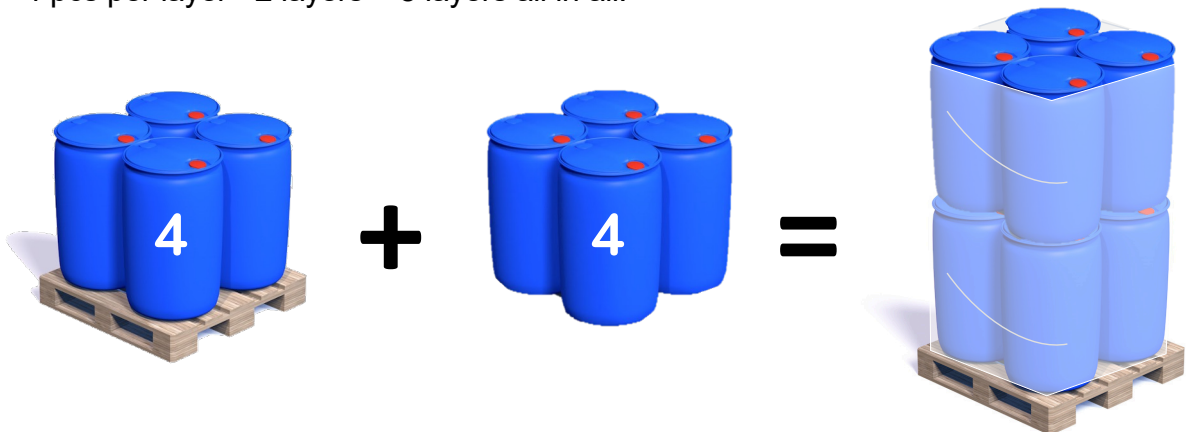
Delivery method 1:

CP3 pal (1140x1140) -pal under each layer which is secured by tape or stretch film.
4 pcs per layer - 2 layers = 8 layers all in all.



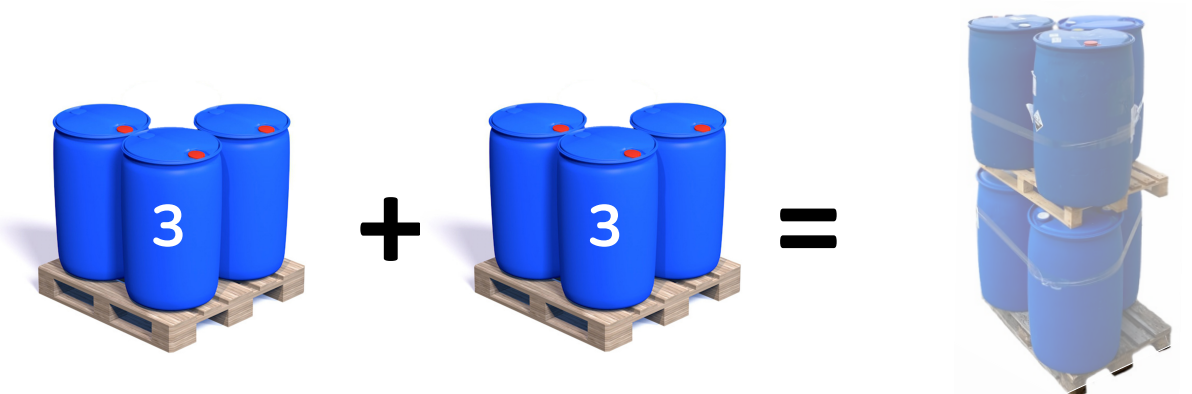
Delivery method 2:

CP3 pal (1140x1140) – which is secured by tape or stretch film.
4 pcs per layer - 2 layers = 8 layers all in all.



Delivery method 3:

EUR pal (1200x800) -pal under each layer which is secured by tape or stretch film,
3 pcs per layer - 2 layers = 6 pcs all in all





7. IBC/PALLET MUST BE STACKED 2 PCS

All IBC/pallets must be stacked with 2 pieces in height when placed on the truck.

